

Figure 3.

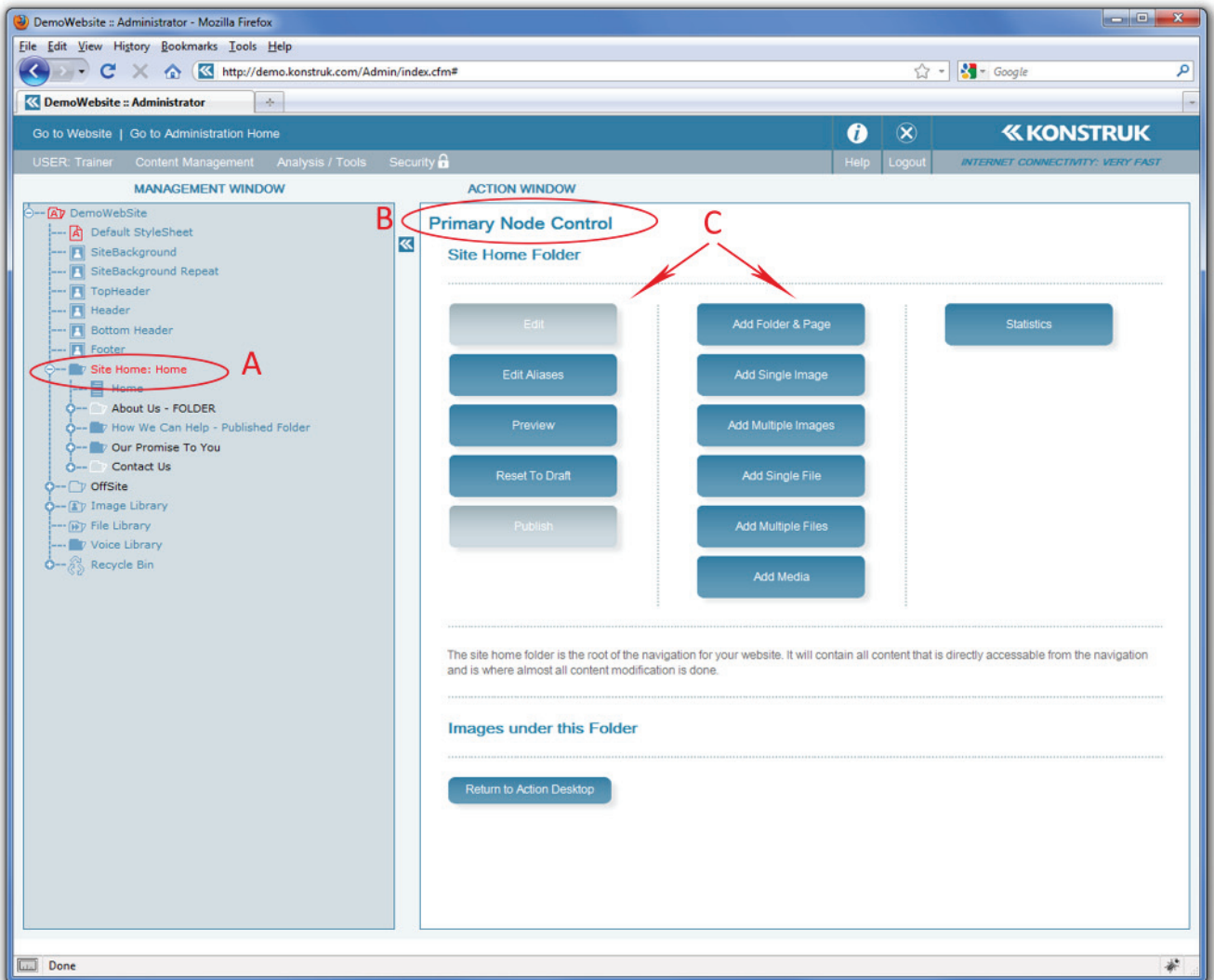


Figure 4.

Administration Tree Welcome Screen

(refer to figure 4)

- A. The Management Window is where you control the navigation and content of your site.
- B. The Action Window alters depending on what icon you have selected in your Management Window. It is also the window which you make all changes to your pages / images / navigation etc.
- C. The Action Desktop takes you back to basics, you will find a “Return to Action Desktop” at the bottom of every Primary Node Control screen.
- D. Search for something - if you are looking for an image or a particular page that mentions a phrase you can select this and define the options.
- E. Another way to find a page or folder that you could be missing.
- F. A manager (or yourself) may have made notes either via the administration or via the website for action at a later date. If you select this button it will open all pages that currently have notes attached to them.
- G. Will open your entire tree allowing you to see all nodes at once.
 - o NB/ if you have a large tree this could take a long time.

Primary Node Control Screen

(refer to figure 5)

- A. The Red Writing indicates that this node has been selected to take an action against it. e.g. adding a new page to your website.
- B. Showing that you are in the Primary Node Control screen. From this screen you can always return to the Action Desktop via the button at the bottom.
- C. All of the different options that are available for action.
 - o NB/ These options will vary depending on which node type you have selected and it's status.